

Texas School Mental Health Resources



This database was created in response to Senate Bill 11 from the 86th Texas Legislature, which required the Texas Education Agency (TEA) to develop a rubric for Education Service Centers (ESCs) to use in identifying resources that are available to schools in their respective regions, along with a list of statewide resources available to school districts to address the mental health of students. This database was created to increase the value and access of the identified resources to all stakeholders.

How to Search

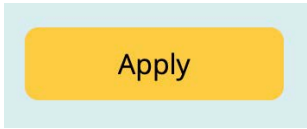
ESC REGION SERVED: - Select -
COUNTIES SERVED: - Select -
DISTRICTS/CHARTERS: - Select -

Location Filters: Identify the narrowest location filter you would like to see in your results (Region, County, or District/Charter). These three filters use OR logic, so adding more location filters will expand your results. For example, if you select Region 1, Travis County, and Dallas ISD in your location filters, your results will include all resources associated with those filters.

KEYWORDS/TAGS: - Select -
ENTER RELATED TERMS: Search by individual terms and phrases
 STATE-WIDE ONLY

Additional Filters: Add a relevant keyword or tag to your search. If you don't find one that fits, type in the open "Enter Related Terms" field. If you are only interested in resources that are available state-wide, check the "State-Wide Only" box.

Click Apply!



Refine Your Results

Refine results

RESOURCE TYPE: - Select -

ZIP CODE LIMITATION: - Select -

INTENDED IMPACT: - Select -

EVIDENCE BASED: - Select -

EVIDENCE BASE TYPE: - Select -

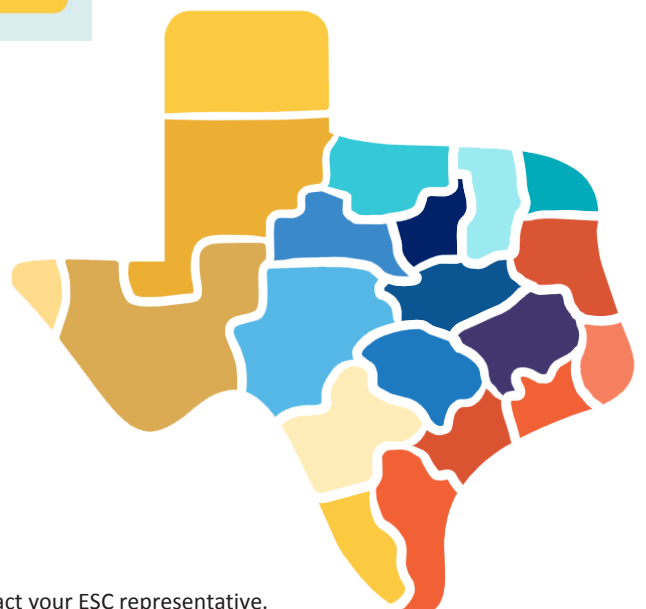
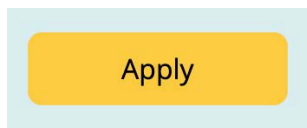
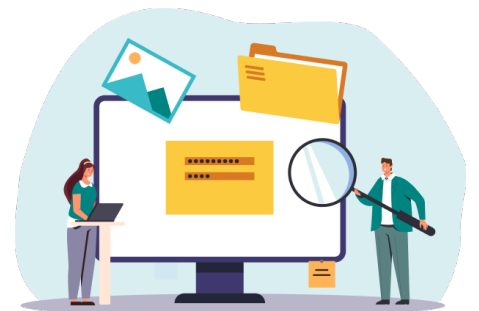
AREA OF FOCUS: - Select -

STATE AGENCY ASSOCIATION: - Select -

Further refine your results by using the additional filters in the left column.

Many of these filterable categories are defined in statute.

After selecting your additional filters, click **Apply** again.



Note: If you find incorrect or outdated results in your search, please contact your ESC representative.